

# Product Characterization Sheet

## 10156021

Monkey Hepatocytes, Catalog Number A75713



### Classification

Plateability	Plateable
Number of days plateable	5
Confluency	80 %
P450 Inducibility	NA
Number of donors	1

### Lot Demographics

Gender	Male
Strain	Rhesus
Age	5.6 months
Weight	NA
Infectious diseases	Negative

### Post-thaw Viability and Yield

Viability	97 %
Yield	5.0 million

**Characterization:** Hepatocytes were thawed using 37°C UCRM™ and centrifuged for 10 minutes at 100g. After removing the supernatant, hepatocytes were re-suspended in UPCM™ and counted for viability and yield using the Trypan Blue exclusion method. Cells were plated at a density of 0.7 million cells per mL in a hand-coated collagen plate and allowed to attach 4-6 hours prior to a Matrigel® overlay.

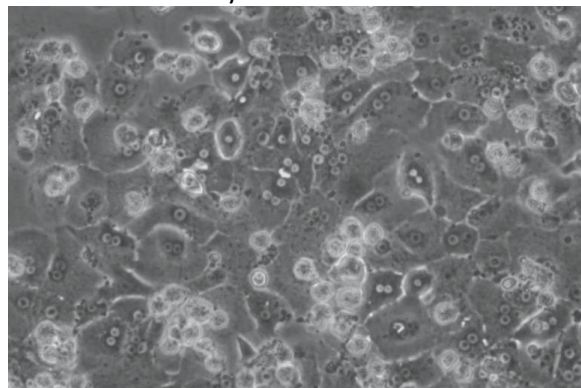
### Drug Metabolism Activity

Drug Metabolizing Enzyme	Substrate (µM)	Incubation Time (minutes)	Metabolite Quantified	Activity (pmol/minute/million cells)
ECOD	7-Ethoxycoumarin (100)	30	7-Hydroxycoumarin	636 ± 28.9
UGT	7-Hydroxycoumarin (100)	30	7-Hydroxycoumarin glucuronide	890 ± 37
Sulfotransferase	7-Hydroxycoumarin (100)	30	7-Hydroxycoumarin sulfate	1170 ± 35

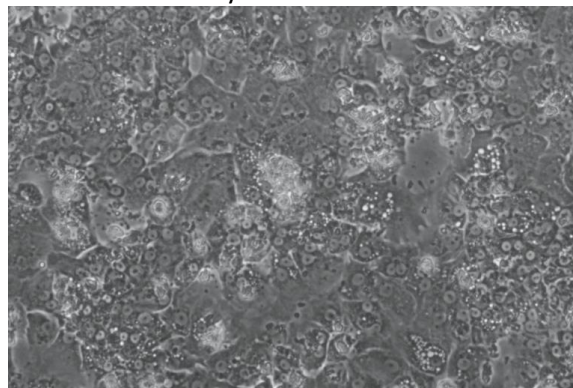
**CYP450 Activity Assessment:** The hepatocytes were incubated at a cell density of 0.5 million hepatocytes/mL in a 12-well plate (500,000 hepatocytes/well) for the designated time durations with isoform-selective substrates. The metabolites were identified and analyzed using LC-MS/MS.

### Photomicrographs (100X, Phase Contrast)

Phase Contrast Day 2



Phase Contrast Day 5



**Monolayer Comments:** 10156021 has a fair attachment efficiency at 60 % and continues to develop a monolayer confluency of 80 % by day 3. This lot exhibits good morphology and remains intact for 5 days in culture.

IVAL cell culture media and tissue culture plates used in this evaluation:

- Recovery of thawed hepatocytes - Cat. No. 81015 - UCRM™ Universal Cryopreservation Recovery Media, 50 mL tube
- Initial plating of hepatocytes - Cat. No. 81016 – UPCM™ IVAL Universal Primary Cell Plating Medium, 50 mL tube
- Sandwich culture with 0.25 mg Matrigel® - Cat. No. 81018/81019 - HIM™ Hepatocyte Induction Media, 50 mL tube/500 mL bottle
- Suspension and incubation of hepatocytes - Cat. No. 81039/81040 - HQM™ Hepatocyte Incubation Media, 50 mL tube/500 mL bottle
- Collagen coated plates - Cat. No. 71006 - CellAffix™ 24-well Collagen Hand Coated tissue culture plate, 5 plates per pack

To inquire about our products and services or for technical questions please contact:

- In Vitro ADMET Laboratories by phone at +1 (866) 458-1094 or +1 (410) 869-9037 or email at [info@invitroadmet.com](mailto:info@invitroadmet.com)