

Product Characterization Sheet

HE3052

Human Enterocytes (duodenum region), Catalog Number 82097



Classification

Plateability	Suspension
Number of days plateable	NA
Confluency	NA
P450 Inducibility	NA
Number of donors	1
Enterocyte size	13.4 ± 1.5 microns

Donor Demographics

Gender	Female
Age	54 years
Race	Caucasian
Cause of death	Head trauma, GSW, Suicide
BMI	37.55
Smoking	Yes
Alcohol	Yes
Substance abuse	No
Medical history	Bipolar disorder
Infectious diseases	HBV-, HCV-, HIV-, CMV+, EBV (IgG)+

Post-thaw Viability and Yield

Viability	85 %
Yield	0.5 million

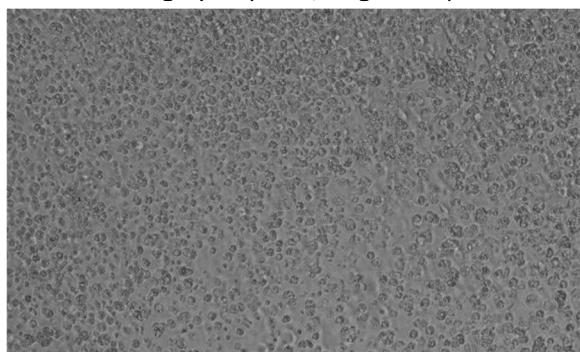
Characterization: Enterocytes were thawed using 37°C CERM™ and centrifuged for 10 minutes at 100g. After removing the supernatant, enterocytes were re-suspended in 4°C HQM™ and counted for viability and yield using the Trypan Blue exclusion method.

Drug Metabolism Activity

Drug Metabolizing Enzyme	Substrate (µM)	Incubation Time (minutes)	Metabolite Quantified	Activity (pmol/minute/million cells)
CYP3A4	Midazolam (20)	60	1-Hydroxymidazolam	0.13 ± 0.15
	Testosterone (200)	60	6β-Hydroxytestosterone	5.3 ± 2.1
CYP2C9	Diclofenac (25)	60	4-Hydroxydiclofenac	0.22 ± 0.08
Sulfotransferase	7-Hydroxycoumarin (100)	60	7-Hydroxycoumarin sulfate	2.5 ± 0.11
UGT	7-Hydroxycoumarin (100)	60	7-Hydroxycoumarin glucuronide	6.99 ± 0.25

CYP450 Activity Assessment: The enterocytes were incubated at a cell density of 2.0 million enterocytes/mL in a 96-well plate (200,000 enterocytes/well) for the designated time duration of 60 minutes with isoform-selective substrates. The metabolites were identified and analyzed using LC-MS/MS.

Photomicrographs (100X, Brightfield)



Enterocyte Morphology: Enterocyte cell size is approximately 12 – 17 microns in diameter. Lymphocytes are approximately 4 microns and may also be observed in the enterocyte cell population.

IVAL cell culture media and tissue culture plates used in this evaluation:

- Recovery of thawed enterocytes - Cat. No. 81056 - CERM™ Cryopreserved Enterocyte Recovery Media, 50 mL tube
- Suspension and incubation of enterocytes - Cat. No. 81039 - HQM™ Hepatocyte and Enterocyte Incubation Media, 50 mL tube

To inquire about our products and services or for technical questions please contact:

- In Vitro ADMET Laboratories by phone at +1 (866) 458-1094 or +1 (410) 869-9037 or email at info@invitroadmet.com