

## Product Characterization Sheet HH1142

Human Hepatocytes, Catalog Number 82006

### Classification:

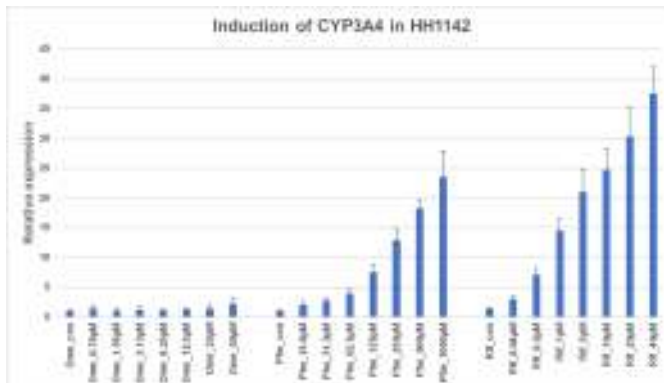
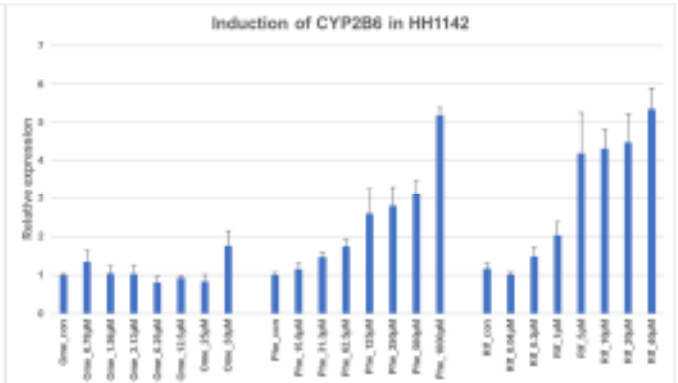
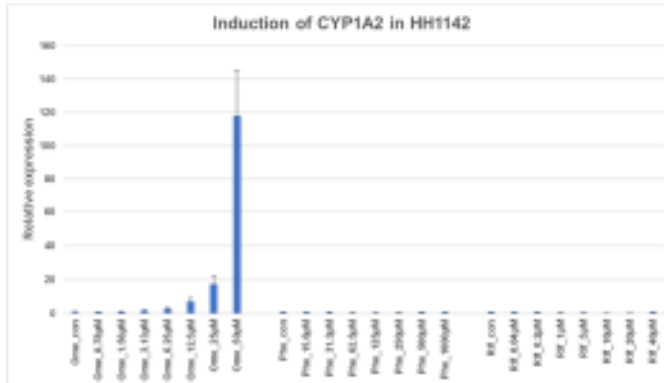
<b>Grade</b>	<b>Highest Quality: 999Elite™</b>
<b>Plateability</b>	<b>Plateable</b>
<b>Viability</b>	<b>&gt;90%</b>
<b>Confluency</b>	<b>&gt;90% (near 100%)</b>
<b>Duration in Culture</b>	<b>&gt;9 Days</b>
P450 Inducibility	Inducible (CYP1A2, CYP2B6, CYP3A4)
Viability	98 %
Yield	7.6 million

### Donor Demographics

Gender	Female
Age	27
Race	Caucasian
Cause of death	Head trauma
BMI	25.0
Smoking	No
Alcohol	No
Substance abuse	No
Medical history	Chest trauma
Infectious diseases	HBV-, HCV-, HIV-, CMV+

**Characterization:** Hepatocytes were thawed using 37°C UCRM™ and centrifuged for 10 minutes at 100g. After removing the supernatant, hepatocytes were re-suspended in 4°C HQM™ and counted for viability and yield using the Trypan Blue exclusion method.

### P450 Fold Induction (Gene Expression)



**CYP450 Induction Assessment:** 96 well cultures at a cell density of 0.5 million hepatocytes/mL (50,000 hepatocytes/well) were used in the CYP450 induction assessment. The hepatocytes were cultured as collagen-Matrigel® sandwich for 1 day followed by 48 hour treatment with known enzyme inducers. Gene expression CYP450 induction is quantified by RT-PCR. Values reflect mean and standard deviation of triplicate treatments (N=3).

## Product Characterization Sheet

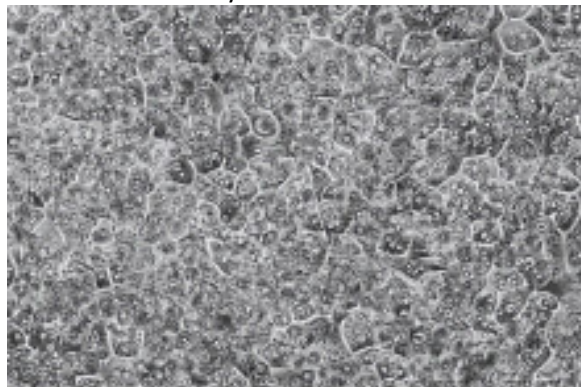
### HH1142

Human Hepatocytes, Catalog Number 82006

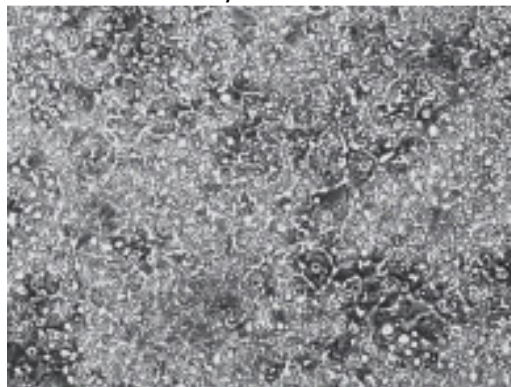


#### Photomicrographs (100X, Phase Contrast)

Phase Contrast Day 2



Phase Contrast Day 10



**Monolayer Comments:** HH1142 has a great attachment efficiency of 90 % and maintains a confluency of 100 % by 24 hours. This lot exhibits excellent morphology and remains intact for over 9 days in culture.

IVAL cell culture media and tissue culture plates used in this evaluation:

- Recovery of thawed hepatocytes - Cat. No. 81015 - UCRM™ Universal Cryopreservation Recovery Media, 50 mL tube
- Initial plating of hepatocytes - Cat. No. 81016 - UPCM™ Universal Primary Cell Plating Media, 50 mL tube
- Sandwich culture with 0.25 mg Matrigel® - Cat. No. 81018/81019 - HIM™ Hepatocyte Induction Media, 50 mL tube/500 mL bottle
- Suspension and incubation of hepatocytes - Cat. No. 81039/81040 - HQM™ Hepatocyte Incubation Media, 50 mL tube/500 mL bottle
- Collagen coated plates - Cat. No. 71006, 71008 - CellAffix™ 24-well and 96-well Collagen Hand Coated tissue culture plate, 5 plates per pack

To inquire about our products and services or for technical questions please contact:

- In Vitro ADMET Laboratories by phone at +1 (866) 458-1094 or +1 (410) 869-9037 or email at [info@invitroadmet.com](mailto:info@invitroadmet.com)