

Product Characterization Sheet HH1161

Human Hepatocytes, Catalog Number 82006

Classification

Grade	Highest Quality: 999Elite™
Plateability	Plateable
Viability	≥90%
Confluency	>90%
Culture Duration	>9 Days
P450 Inducibility	Inducible (CYP1A2, CYP2B6, CYP3A4)

Donor Demographics

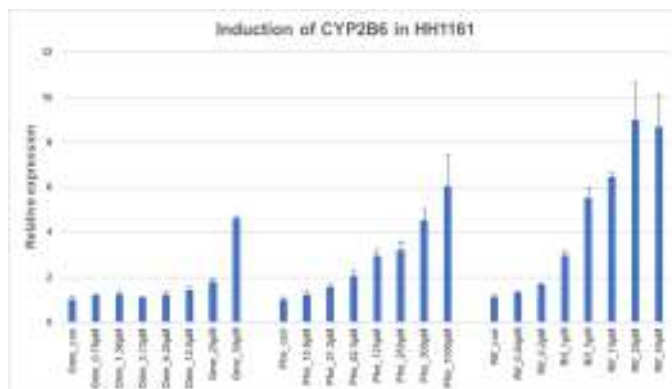
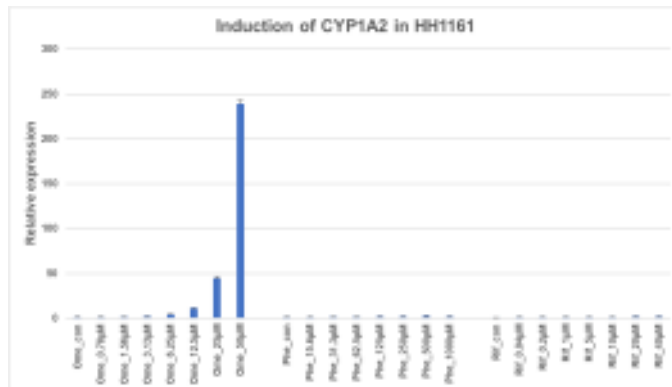
Gender	Male
Age	35 years
Race	African American
Cause of death	Anoxia, CVA, Non-MVA accident
BMI	32.26
Smoking	No
Alcohol	No
Substance abuse	No
Medical history	N/A
Infectious diseases	HBV-, HCV-, HIV-, CMV+

Post-thaw Viability and Yield

Viability	92 %
Yield	10.4 million

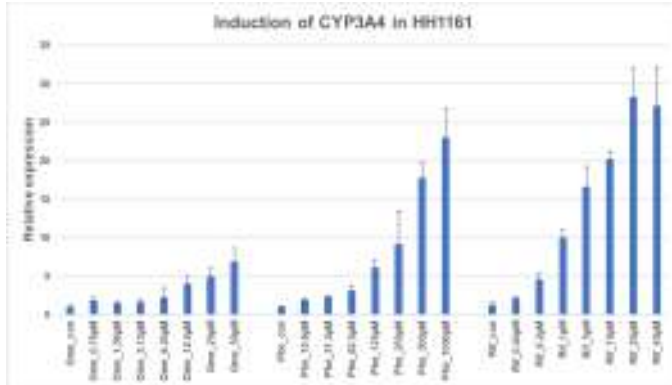
Characterization: Hepatocytes were thawed using 37°C UCRM™ and centrifuged for 10 minutes at 100g. After removing the supernatant, hepatocytes were re-suspended in UPCM™ and counted for viability and yield using the Trypan Blue exclusion method. Cells were plated in a hand-coated collagen 24-well plate at a 0.7 million cells per mL density, 0.5 mL per well, and allowed to attach 4-6 hours prior to a Matrigel® overlay.

P450 Fold Induction (Gene Expression)



Product Characterization Sheet
HH1161

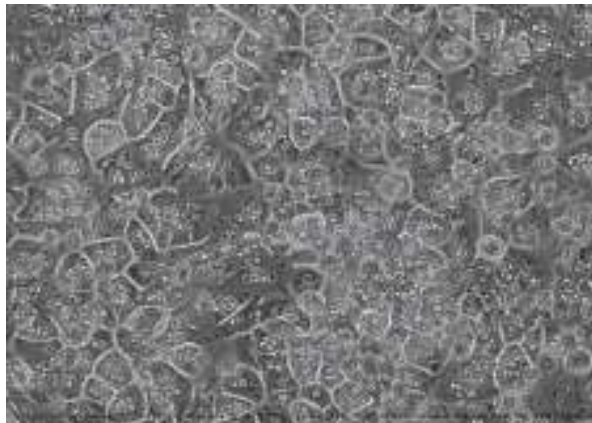
Human Hepatocytes, Catalog Number 82006



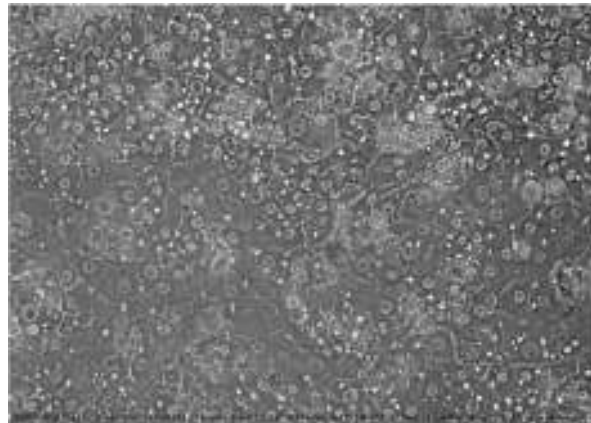
CYP450 Induction Assessment: 96 well cultures at a cell density of 0.5 million hepatocytes/mL (50,000 hepatocytes/well) were used in the CYP450 induction assessment. The hepatocytes were cultured as collagen-Matrigel® sandwich for 1 day followed by 48 hour treatment with known enzyme inducers. Gene expression CYP450 induction is quantified by RT-PCR. Values reflect mean and standard deviation of triplicate treatments (N=3).

Photomicrographs (100X, Phase Contrast)

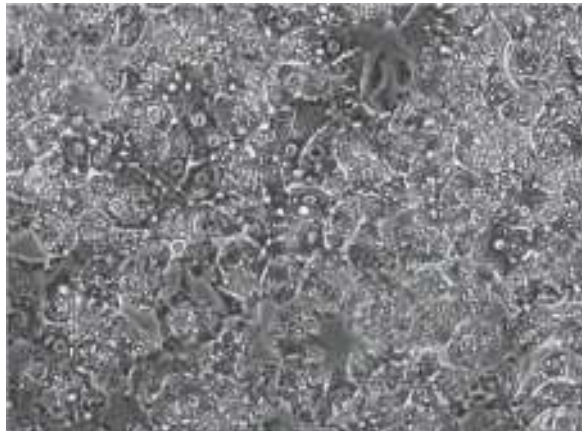
Phase Contrast Day 2



Phase Contrast Day 6



Phase Contrast Day 11



Product Characterization Sheet

HH1161

Human Hepatocytes, Catalog Number 82006



Monolayer Comments: It is recommended to seed HH1161 at a seeding density of 0.7 million cells per mL. HH1161 has an excellent attachment efficiency of 100 % and a confluency of 100 % by 24 hours. This lot exhibits excellent morphology and continue to develop a 100 % confluency by day 4. This lot remains intact for over 5 days in culture.

IVAL cell culture media and tissue culture plates used in this evaluation:

- Recovery of thawed hepatocytes - Cat. No. 81015 - UCRM™ Universal Cryopreservation Recovery Media, 50 mL tube
- Initial plating of hepatocytes - Cat. No. 81016 - UPCM™ Universal Primary Cell Plating Media, 50 mL tube
- Sandwich culture with 0.25 mg Matrigel® - Cat. No. 81018/81019 - HIM™ Hepatocyte Induction Media, 50 mL tube/500 mL bottle
- Suspension and incubation of hepatocytes - Cat. No. 81039/81040 - HQM™ Hepatocyte Incubation Media, 50 mL tube/500 mL bottle
- Collagen coated plates - Cat. No. 71006, 71008 - CellAffix™ 24-well and 96-well Collagen Hand Coated tissue culture plate, 5 plates per pack

To inquire about our products and services or for technical questions please contact:

- In Vitro ADMET Laboratories by phone at +1 (866) 458-1094 or +1 (410) 869-9037 or email at info@invitroadmet.com